

發展稀有細胞收集系統在精準醫療上的應用

主要領域

創新醫療應用

■ 產品/技術簡介

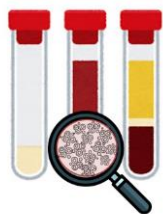
- 從癌症病患少量的血液檢體中，即可擷取腫瘤與免疫的重要資訊，此資料庫將可幫助即時與非侵入式的癌症診斷

■ 應用

- 建立癌症檢測平台
- 構築腫瘤與免疫交互資料庫

■ 優勢

- 非侵入性檢測，無需取得原位腫瘤組織
- 即時的腫瘤免疫資訊可加強目前的基礎癌症研究以及臨床癌症檢測與個人化醫療



純化、增幅與分析腫瘤
與相關免疫細胞資訊



Developing Cell-Based Apheresis for the Applications in Precision Medicine

Research Area

Innovative Medical Applications

▪ Technical statement

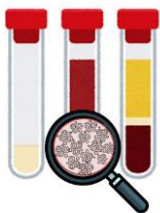
- Collecting the information of tumor and immune cell interaction is from a small amount of blood specimen, and helps real-time and non-invasive cancer diagnosis

▪ Applications

- Establishment of cancer detection platform
- Construction of the tumor-immune database

▪ Advantages

- Non-invasive detection without biopsy from tumor sites
- Real-time CTC-immune information to strengthen basic cancer research, clinical cancer detection and personal medicine



Proprietary isolation,
expansion and analysis
of tumor and immune
information



計畫成員 Project members



張瑛芝研究員



車婷芳博士



韓皓偉博士



- **Contact person:** Dr. Ying Chih Chang / Dr. Ting-Fang Che
- **TEL:** +886-2-2789-8788
- **Email:** yingchih@gate.sinica.edu.tw / tfche@gate.sinica.edu.tw